



228 E. Randolph Ave. - Enid, OK: Simpson's Old Time Museum

\$549,000

Price Reduced! Formerly the world famous Simpson's Mercantile, and currently Simpson's Old Time Museum and home of Skeleton Creek Productions, this Enid downtown icon is available for the first time in two generations and at a new reduced price. 31,417 sq. ft. of space in main floor plus a mezzanine area. Additional storage space on top floor. Could be remastered as a theater, multi-tenant retail, office, mixed use, or whatever you could envision. Due to the volume of museum items, pictures would not tell the story of the building, so it is best to schedule your own private viewing. Call Cole J. Ream 580-484-8401 and we can arrange a comprehensive tour of the building. The museum is also open most days and available for a main floor tour.

Details

Zoning C-4 Central Business District

Lot Size 29,766 sq. ft.; irregular

HVAC CH&A

Utilities All Public

Bathrooms 3

Offices 3

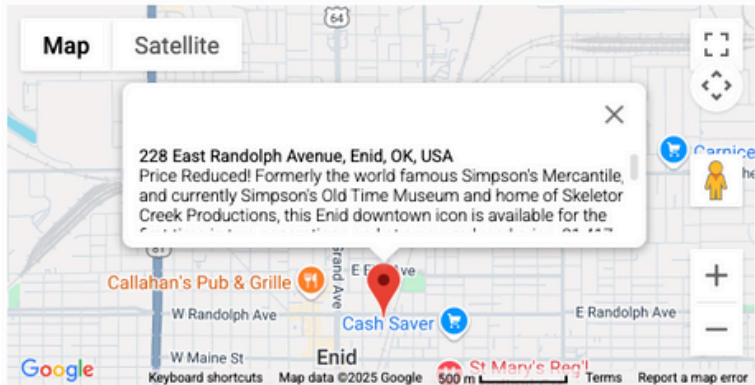
Office Areas 1,000 sq. ft.

Parking Public

Shop/Warehouse

Common Areas

Location (City) Downtown Enid



Agent



Cole J. Ream
580-484-8401
cole@nicholascommercial.com